



2018

ANNUAL REPORT

Partnering with men & the community to create a path from homelessness to stable living.

BOARD OF DIRECTORS

Clare Moe CHAIR	Nadine Bentsen
Jim Long VICE CHAIR	Bonnie Bowie
Judy Courshon TREASURER	Crissa Cugini
Michael Kattermann SECRETARY	Chris Jowell
	Chuck Kimbrough
	Shawn McCord
	Pat McDermott

Dear Friends,

This year has highlighted the profound good that can be accomplished when the wider community comes together to address needs.

This year the business community joined CFH, the City of Bellevue, foundations, and individuals in the community to create a plan and raise the money needed to provide year-round emergency shelter on the Eastside. For the first time ever, men experiencing homelessness will have access to shelter and life-changing resources year-round, and the bunkbeds pictured above will never again sit empty for 6 months of the year! Together we have provided hope, dignity, and the building blocks that provide stability to people in need on our streets.

With your partnership, we have continued to transform the lives of thousands of people throughout this last year. Over 60 percent of the men who accessed the year-round program shelter graduated into permanent housing, and 95 percent of the men in CFH housing stayed housed for two years or longer with the support of the case management team. With such phenomenal partnerships and support from the Eastside community, CFH was able to serve over 83,000 meals over the course of the year. Several hundred men were able to achieve permanent stable housing through accessing our shelter, day center, and case management services over the year.

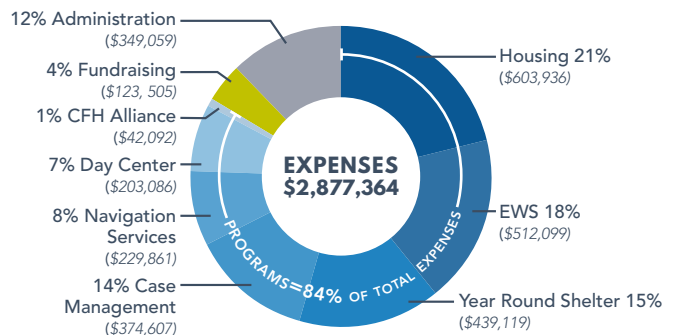
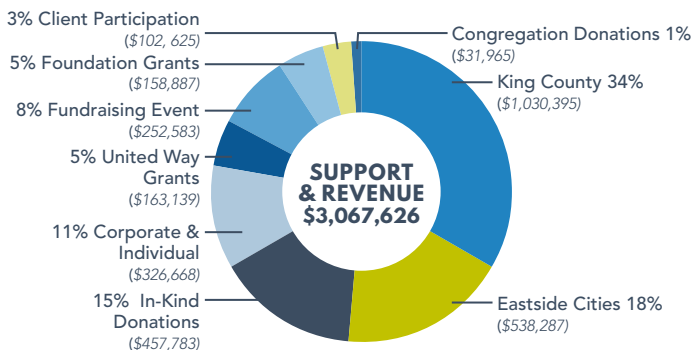
With your partnership and support, CFH was able to support over 2,000 different individuals in 2018. The good work that we do is only possible with the assistance of our amazing partners, donors, and volunteers. Thank you for helping to make this a stronger community for everyone.

Blessings,

DAVID BOWLING
EXECUTIVE DIRECTOR



2018 FINANCIALS



BEGINNING NET ASSETS: \$1,553,228 ENDING NET ASSETS: \$1,743,490
*Investment income \$5,294

2018

IMPACT REPORT



83,000
MEALS
SERVED

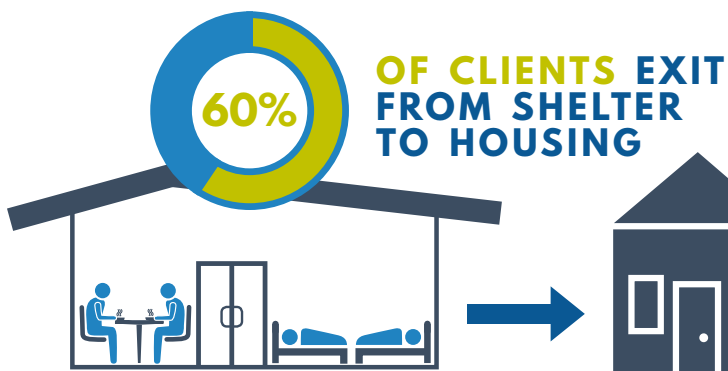
95%
OF CLIENTS
REMAIN
IN STABLE HOUSING
AFTER 2 YEARS



MORE THAN
2,000
PERSONS SERVED



62,541
BED-NIGHTS
PROVIDED



Jed's Saga

Jed became homeless several years ago while struggling with bouts of depression and pain, eventually becoming disconnected from his family, making a bad situation even worse. He found it difficult to relax in the confined spaces offered by most shelter facilities, making recovery even more unlikely. Fortunately, he found CFH and met Dwight Jackson, a legendary CFH case manager. Dwight came alongside him and provided the advice, counsel, and support he needed to regain a sense of self-worth and to begin to heal. Dwight strongly encouraged Jed to pursue his dream of owning a Kettle Korn business, and helped him develop a business plan to that end. The supportive services Jed accessed through CFH, coupled with the trusting relationship he established with Dwight, kept him on a path to recovery, leading ultimately to reconciliation with his family and to being able to move out of CFH facilities.

Dwight came alongside him and provided the advice, counsel, & support he needed...

During a random visit to Alderwood Mall in Lynnwood, Washington, a CFH staff person happened-upon a Kettle Korn kiosk and out of curiosity stopped by to chat with the operator. It turned out to be Jed. He and his son Jerrison had launched the fledgling business. Jed's vision had always been to grow the business, once established, to the point that he could employ others experiencing homelessness and have them selling Kettle Korn rather than panhandling on street corners. This chance encounter at the mall provided evidence that due to having received essential, life-saving support from CFH at a pivotal time in his life, Jed was well along the path of realizing his dream.



Jed (on right) with son Jerrison



CFH
CONGREGATIONS FOR THE HOMELESS
from homelessness to housing, one man at a time

515 116th Ave NE, Suite 150
Bellevue, WA 98004



(425) 289-4044 | www.cfhomeless.org | [f @www.cfhomeless.org](https://www.facebook.com/cfhomeless.org) | [@CF_Homeless](https://twitter.com/CF_Homeless)